

# ⊕ On-edge Strip Construction Artist Credits

---



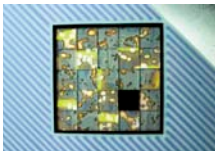
Klaus Moje, *The Portland Panels: Choreographed Geometry* (detail), 2007. Sheet glass, fused and diamond polished. Four panels: each 74.5 x 47.25 inches (189.2 x 120 cm). [www.bullseyegallery.com](http://www.bullseyegallery.com)



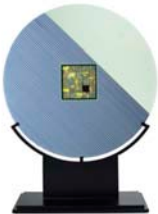
Jim Weiler, *untitled plate*, 2011. [www.weilerglass.com](http://www.weilerglass.com)



Steve Klein, *Shelter 5*, 2010. Kilnformed glass, 8.375 x 17.125 x 16.5 inches (21 x 43.5 x 42 cm). [www.bullseyegallery.com](http://www.bullseyegallery.com)



Steve Immerman, *Aerial* (detail), 2007. Kilnformed glass, 26.375 x 20.125 x 7 inches, with stand (67 x 51 x 18 cm). [www.clearwaterglass.com](http://www.clearwaterglass.com)



Steve Immerman, *Aerial*, 2007. Kilnformed glass, 26.375 x 20.125 x 7 inches, with stand (67 x 51 x 18 cm). [www.clearwaterglass.com](http://www.clearwaterglass.com)



Jim Weiler, *untitled plate*, 2011. [www.weilerglass.com](http://www.weilerglass.com)