

# ⊕ How to Choose a Glass for Kilnforming Artist Credits



Klaus Moje, circa 1980,  
Bullseye Glass Co.



Photographer: Jason Quigley.  
[www.photojq.com](http://www.photojq.com)



Klaus Moje, 1993, Bullseye Glass Co.  
Photographer: Russell Johnson.



Photographer: Jerome Hart.  
[www.jhartphoto.com](http://www.jhartphoto.com)



Photo courtesy of  
Brazee Street Studios.  
[www.brazeestreetstudios.com](http://www.brazeestreetstudios.com)



Ellen George, *BLOOM*, 2008.  
(Before installation.)



Photographer: Heather Zinger.  
[www.heatherzinger.com](http://www.heatherzinger.com)



Ellen George, *BLOOM* 2008.  
Kilnformed glass, 9 feet by 15 feet  
by 3 inches, installed. The Nines  
Hotel, Portland, Oregon.  
[www.pdxcontemporaryart.com/george](http://www.pdxcontemporaryart.com/george)



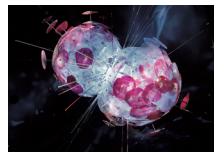
Photographer: Steven Immerman.  
[www.clearwaterglass.com](http://www.clearwaterglass.com)



Catharine Newell, *Here and There:  
Grand Central I*, 2010. Kilnformed  
glass, 17.625 x 20.5 x 2 inches.  
[www.bullseyegallery.com](http://www.bullseyegallery.com)



Photographer: Michael Schmitt.  
[www.michaelschmitt.com](http://www.michaelschmitt.com)



Stan Boles, BOORA Architects, *Eta  
Carinae*, 2002. Kilnformed glass,  
aluminum frame, halide and halogen  
internal lamps, approximately 13.33 x  
9.33 feet. [www.boora.com](http://www.boora.com)



Photographer: Austin M. Shaffer.



Photo courtesy of Warm Glass UK.  
[www.warm-glass.co.uk](http://www.warm-glass.co.uk)